

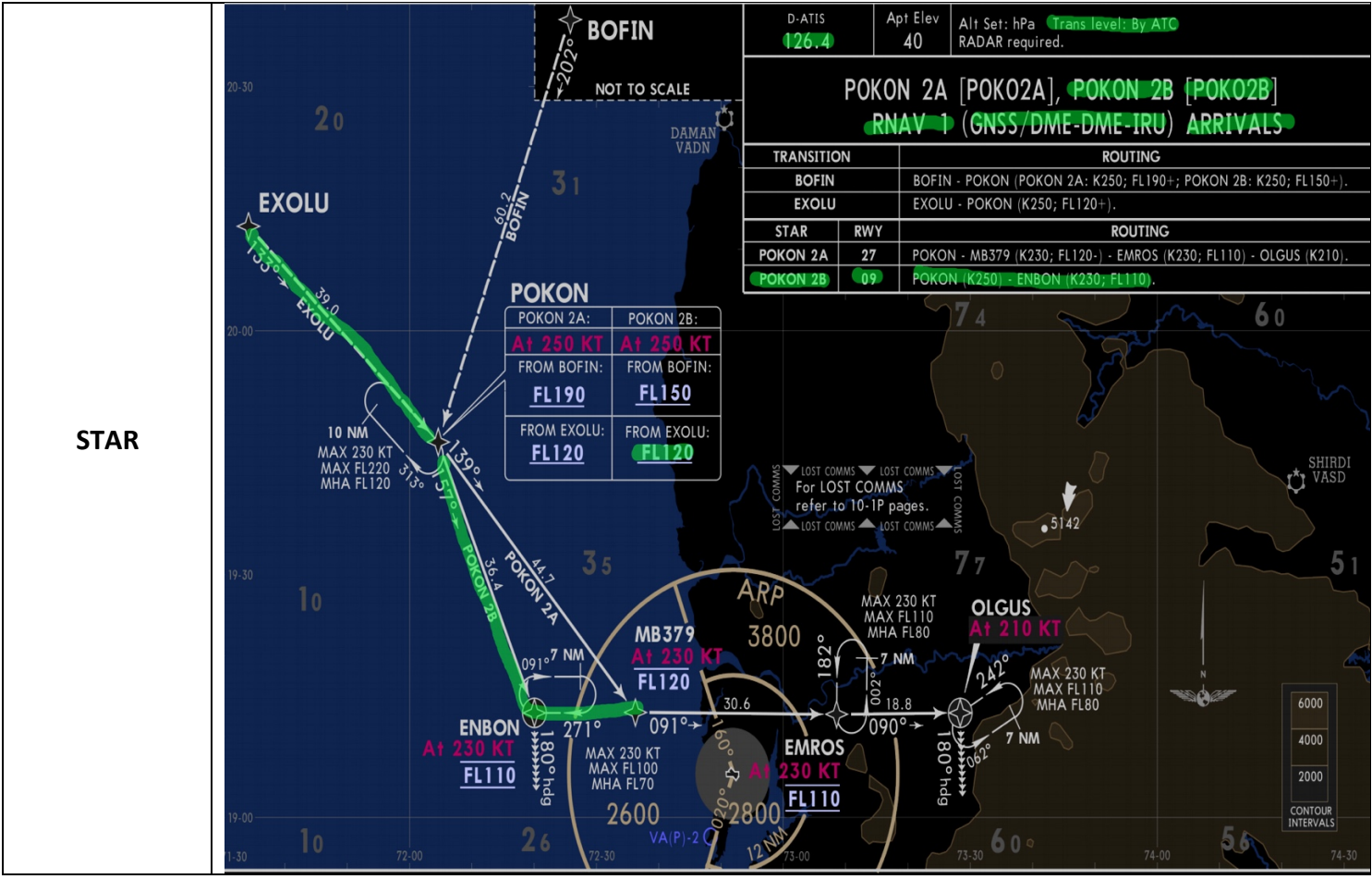
**AIRPORT BRIEFING**

Revision 1.0

INDIA – MUMBAI VAAB

Nov 2022

Origin	OERK
Destination	VABB
Alternate	VOHS
Date	17/11/22
Time	21:12Z
Route	ALTA1G ALTAV H976 MUSRI P891 GESOR L308 DAROR P559 NALPO P559 VUTEB L223 LOVEM L562 SERSA P307 TONVO P307 VAXIM L301 KARKU M638 BBB
Metar	172100Z 14004KT 3000 FU NSC 24/09 Q1011 NOSIG
Frequencies	APP 120.000 ALTAV 126.000 KODAT 133.250 GESOR 132.500 DAROP (Bahrain)127.525 DEBEN (Bahrain) 132.125 NALPO (UAE)132.150 TONVO (Muscat) 119.800 ITLOB (Muscat) 128.150 RASKI (HF) 8879 Primary - 6661 Secondary KARKU 132.700 EXOLU 125.350 APPROACH 127.900 TOWER 118.100 GROUND 121.900
Briefing	<ul style="list-style-type: none">• Category C airport. It is fairly simple and straight forward only there is small Terrain on the Final of RWY 27 which if the Pilots use high vertical speed decent in that area, it will trigger a GPWS warning. So, shallowing the V/S will solve it. Many Airlines Categorize this airport as A not C.• ATC Phraseology is poor.• ATC keeps you high, be ready to configure in Time.



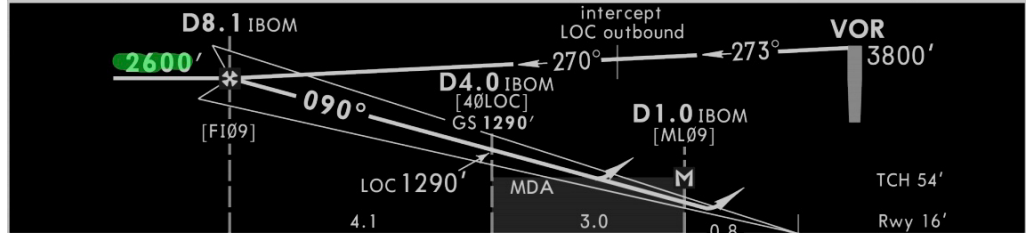
CHHATRAPATI SHIVAJI MAHARAJ INTL (11-1A) 20 AUG 21 ILS Rwy 09

D-ATIS	MUMBAI Approach (R)	MUMBAI Tower	Ground
126.4	127.9 119.3	118.1	121.75 121.85 121.9
LOC IBOM 109.5	Final Apch Crs 090°	GS D4.0 IBOM 1290' (1274')	ILS DA(H) 270' (254')
			Apt Elev 40' Rwy 16'
<p>MISSED APCH: Climb STRAIGHT AHEAD to 1000', thereafter climbing turn LEFT to join VOR holding at 3800', or as directed. MAX 210 KT. Do not turn before threshold.</p>			
Alt Set: hPa		Rwy Elev: 1 hPa	Trans level: By ATC Trans alt: 4000'
DME required.			MSA BBB VOR



Approach

LOC (GS out)	IBOM DME	8.0	7.0	6.0	5.0	4.0	3.0	2.0
	ALTITUDE	2560'	2250'	1930'	1610'	1290'	970'	650'



Gnd speed-Kts	70	90	100	120	140	160		
ILS GS or							HIALS	210 KT
LOC Descent Angle	3.00°	372	478	531	637	743	PAPL	MAX
MAP at D1.0 IBOM								1000'

Standard/DGCA		ILS		STRAIGHT-IN LANDING RWY 09		LOC (GS out)	
		DA(H) 270' (254')				CDFA	
						MDA(H) 440' (424')	
		FULL		ALS out		ALS out	
A					RVR 1500m		
B	RVR 800m			RVR 1300m			
C					RVR 1600m	RVR 2000m	
D							



Taxi

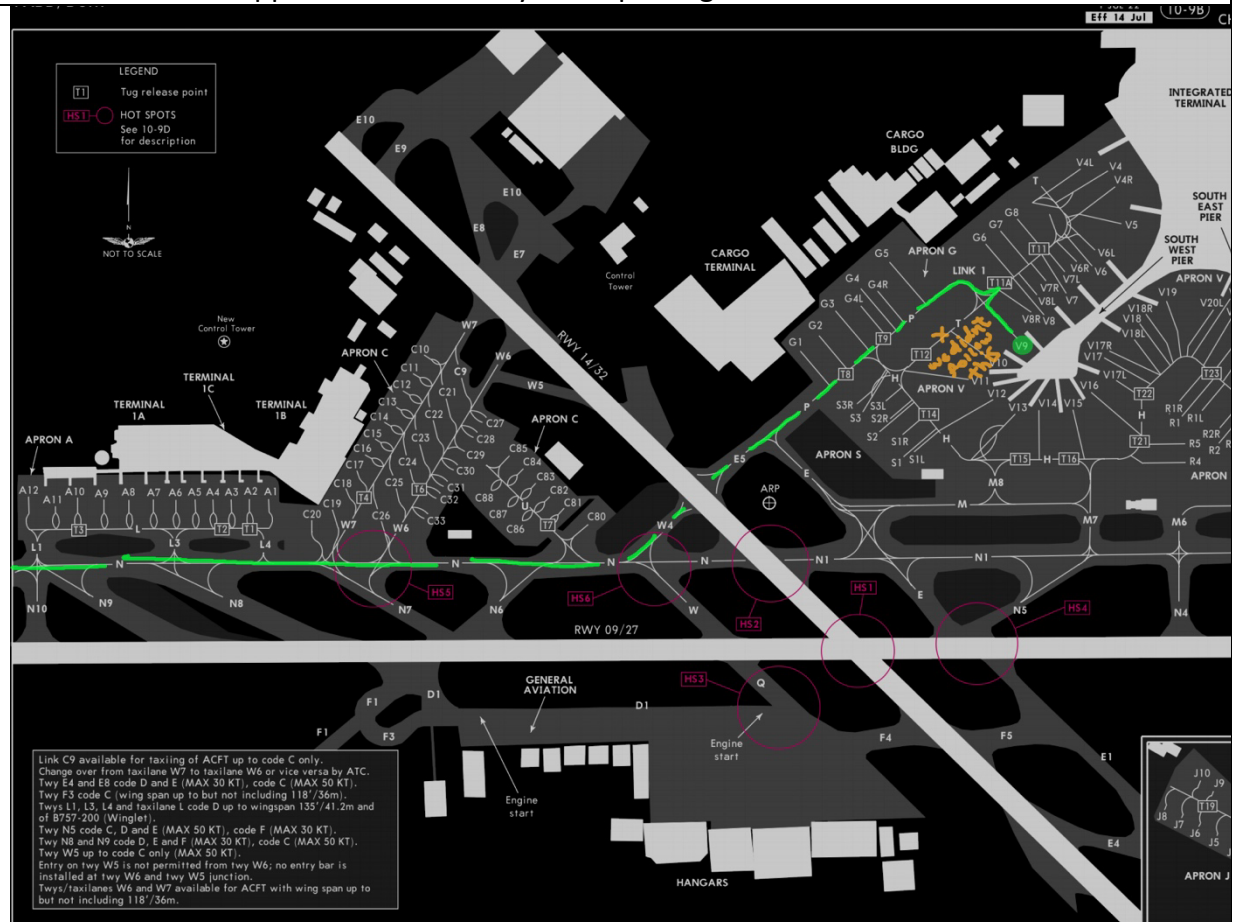
Origin	VABB
Destination	OERK
Alternate	OEDF
Date	17/11/22
Time	22:50Z
Route	VABB RAXE2A SAKUN V2 BIMOT V1 KARKU L301 RAGMA N571 ALPOB L768 ULADA T136 EMUSA Q212 ETBAS ETBA1A OERK
Metar	172230Z 06008KT 3000 FU NSC 25/07 Q1011 NOSIG
ATC	Clear to OERK via V2 V1 RWY 09 FL080 127.900 Transition SAKUN
Frequencies	DELIVERY 121.850 GROUND 121.900 TOWER 118.100 DEP 127.900 RAXET 133.300 SAKUN 132.700 BIMOT 135.750 KARKU 135.750 Mumbai oceanic AKNOX 8.879 HF RASKI 135.600 Muscat change SQ code VAXIM 128.150 TOVDI 119.800 MENSA 132.550 UAE TUDIS 124.375 ALPOB 132.125 Bahrain SOLOB 127.525

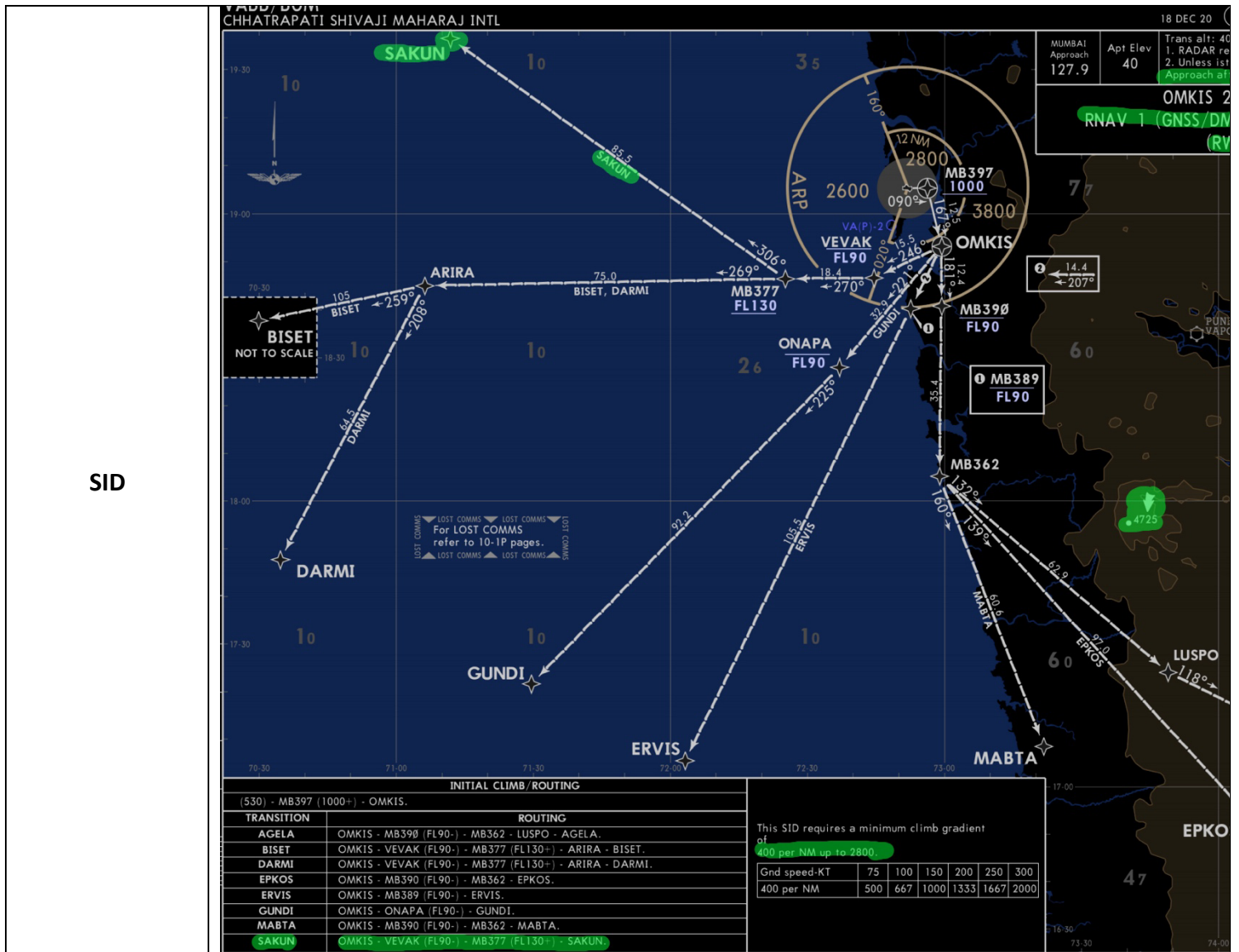
ULADA 132.500 Riyadh
 EMOGA 133.250 Jeddah
 GETOT 126.000
 APPROACH 120.00

Briefing

Contact Mumbai Approach immediately when passing 800ft on 127.900

Taxi





Additional Remarks:

If RWY in use is 27, STAR, APP and SID will be the following:

- **STAR:** POKAN 2A RWY 27
- **APP:** Plate 11-3
- **TAXI:** vacate via N8
- **SID:** RAXET 2A 10-3E