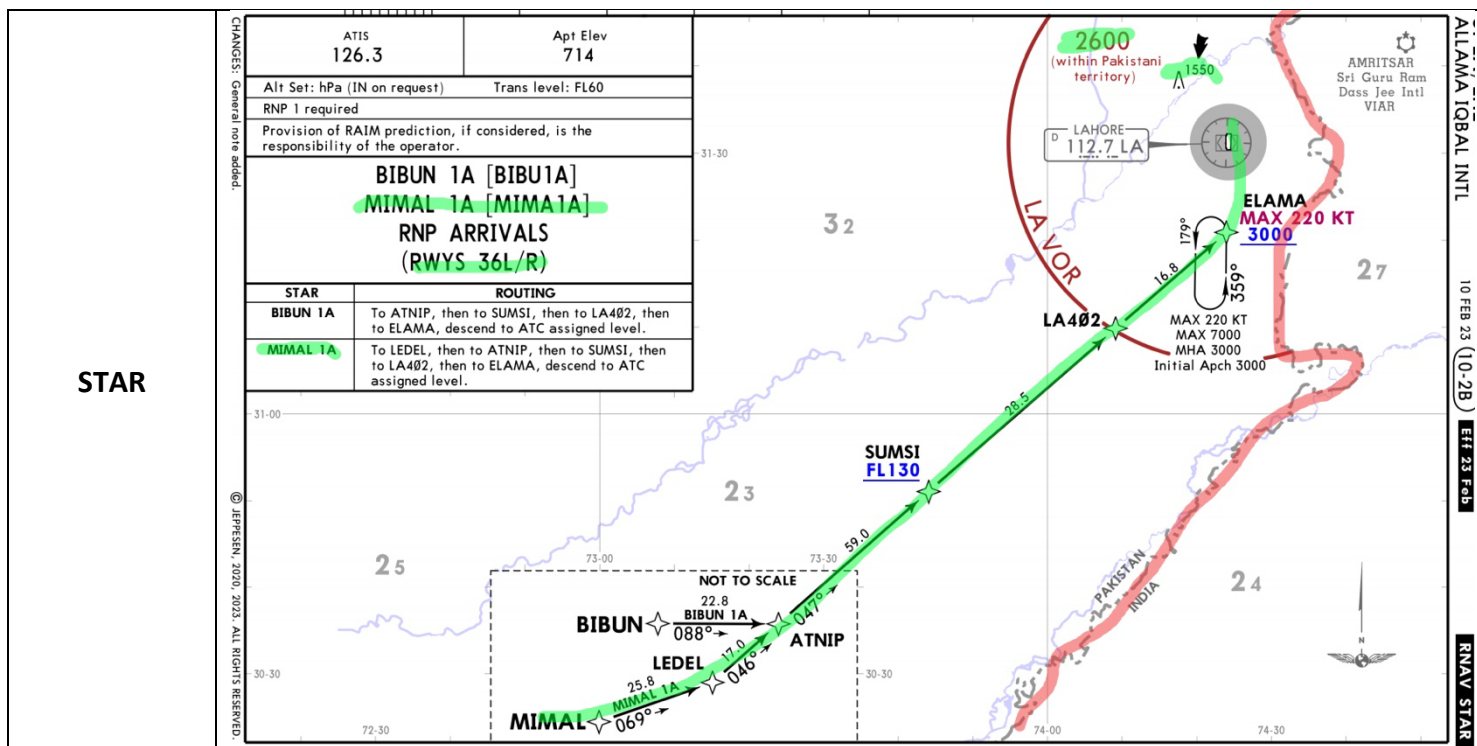


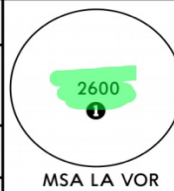
	AIRPORT BREFING	Revision 1.0
	Pakistan – Allama Iqbal International Airport– OPLA	Feb 2023

Origin	OERK
Destination	OPLA
Alternate	OPIS
Enroute Alt	OEDF OMDB OMSJ OOMS OPKC
Date	21/02/2023
Time	09:16Z
Route	ALTA1G ALTAV H976 MUSRI P891 GESOR L308 DAROR P559 NALPO P559 VUTEB L223 LOVEM L562 SERSA P307 TONVO A777 NADSO B505 PG G214 VEREN VERE1C
Metar	OPLA 210855Z 32007KT 4000 HZ NSC 27/12 Q1011 NOSIG
Frequencies	ALTAV 126.000 RIYADH KODAT 133.250 JEDDAH GESOR 132.500 RIYADH DAROR 127.5256 BAHRAIN DEBEN 132.125 BAHRAIN NALPO 132.150 UAE AMBOV 132.550 UAE TONVO 119.800 MUSCAT ITLOB 128.150 MUSCAT APELO 133.025 KRATCHI SOUTH PI 128.850 KRATCHI SK 123.150 LAHOR MURLI 127.500 LAHOR EAST APPROACH 121.300 TOWER 118.400 GROUND 118.100
Briefing	<ul style="list-style-type: none"> • Category A airport. • Lots of Birds on final and short final too. • ATC Phraseology. • Border with India. • Here is a video link to the Arrival and the approach. https://www.youtube.com/watch?v=-pe4dYuHz_g



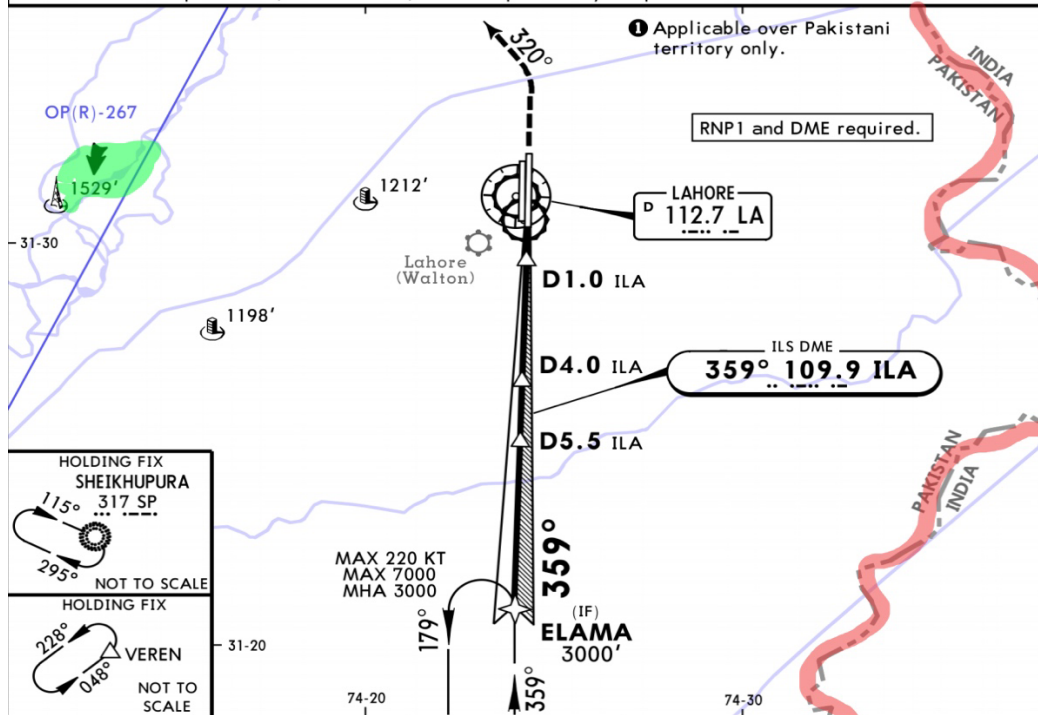
ALLAMA IQBAL INTL 17 FEB 23 (11-3) ILS or LOC 'Z Rwy 36R
 Eff 23 Feb

ATIS 126.3	LAHORE Approach 121.3	LAHORE Tower 118.1	Ground 118.4
LOC ILA 109.9	Final Apch Crs 359°	D5.5 ILA 2500' (1792')	ILS DA(H) Refer to Minimums
Apt Elev 714'			Rwy 708'
MISSED APCH: Climb STRAIGHT AHEAD to 3000', then turn LEFT on 320° and contact ATC.			
Alt Set: hPa (IN on req)		Rwy Elev: 26 hPa	Trans level: FL060 Trans alt: 4000'

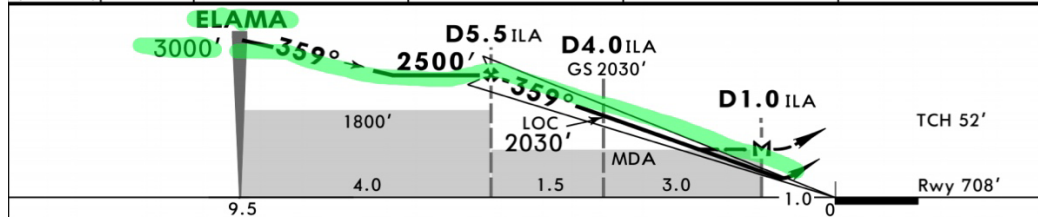


Provision of RAIM prediction, if considered, is the responsibility of operator.

Approach



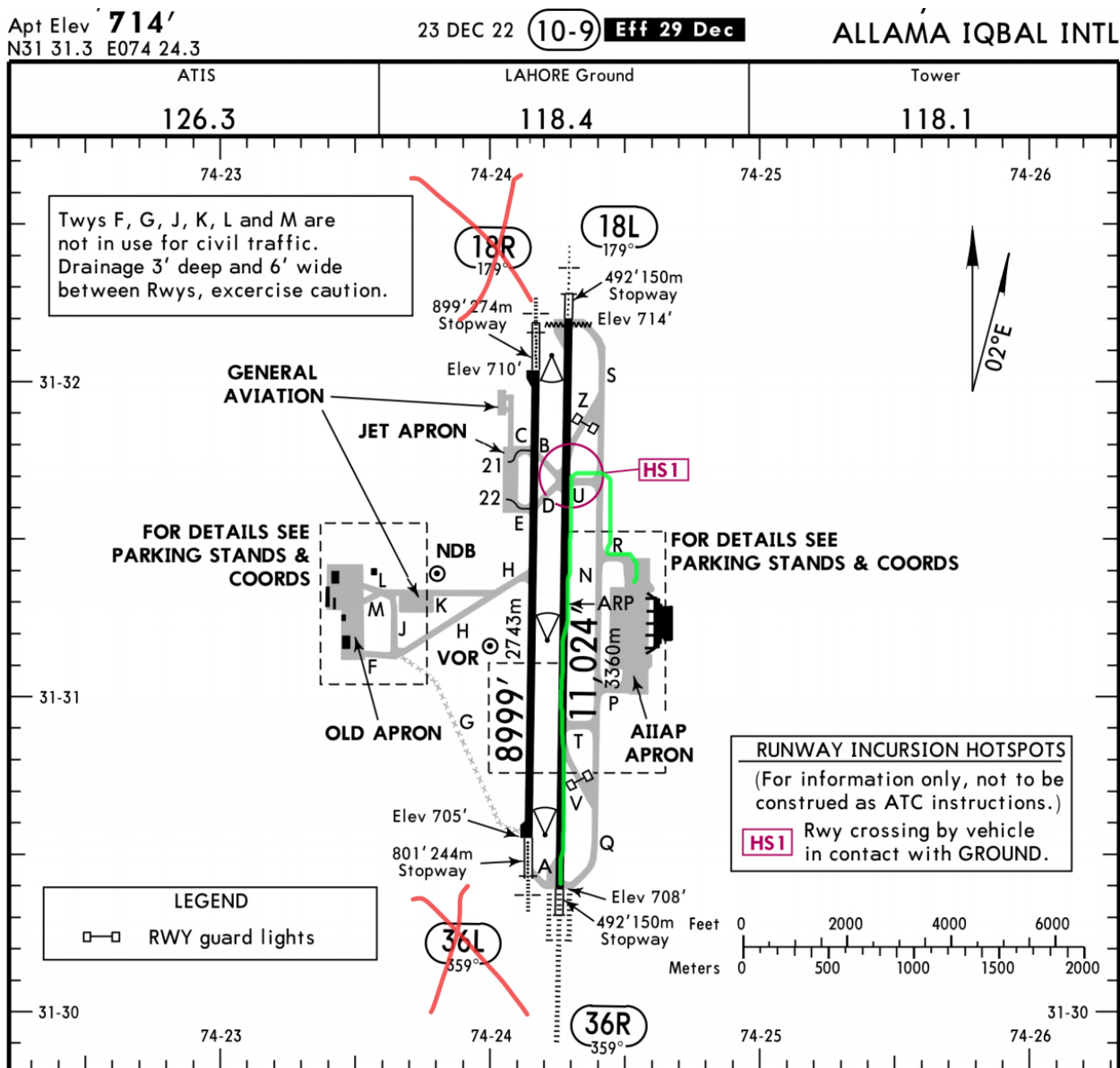
LOC	ILA DME	5.0	4.0	3.0	2.0
(GS out)	ALTITUDE	2350'	2030'	1710'	1390'



Gnd speed-Kts	70	90	100	120	140	160	HIALS-II PAPI PAPI 3000' 320° LT
ILS GS or	372	478	531	637	743	849	
LOC Desc Angle	3.00°						

Std	ILS STRAIGHT-IN LANDING			LOC (GS out) CDFA		CIRCLE-TO-LAND	
	DA(H) AB: 908' (200')	CD: 925' (217')	DA/MDA(H) 1110' (402')				
	FULL	TDZ or CL out	ALS out	ALS out	Max Kts	MDA(H)	
A				R1500m	100	1510' (802') V1500m	
B					135	1510' (802') V1600m	
C	R550m	R550m	R1200m	R1200m	180	1860' (1152') V2400m	
D				R1900m	205	1860' (1152') V3600m	

1 RVR 750m when a Flight Director or Autopilot or HUD to DA is not used. 2 VNAV DA(H) in lieu of MDA(H) depends on operator policy. 3 Circling height based on rwy 36R thresh elev of 708'.



Taxi

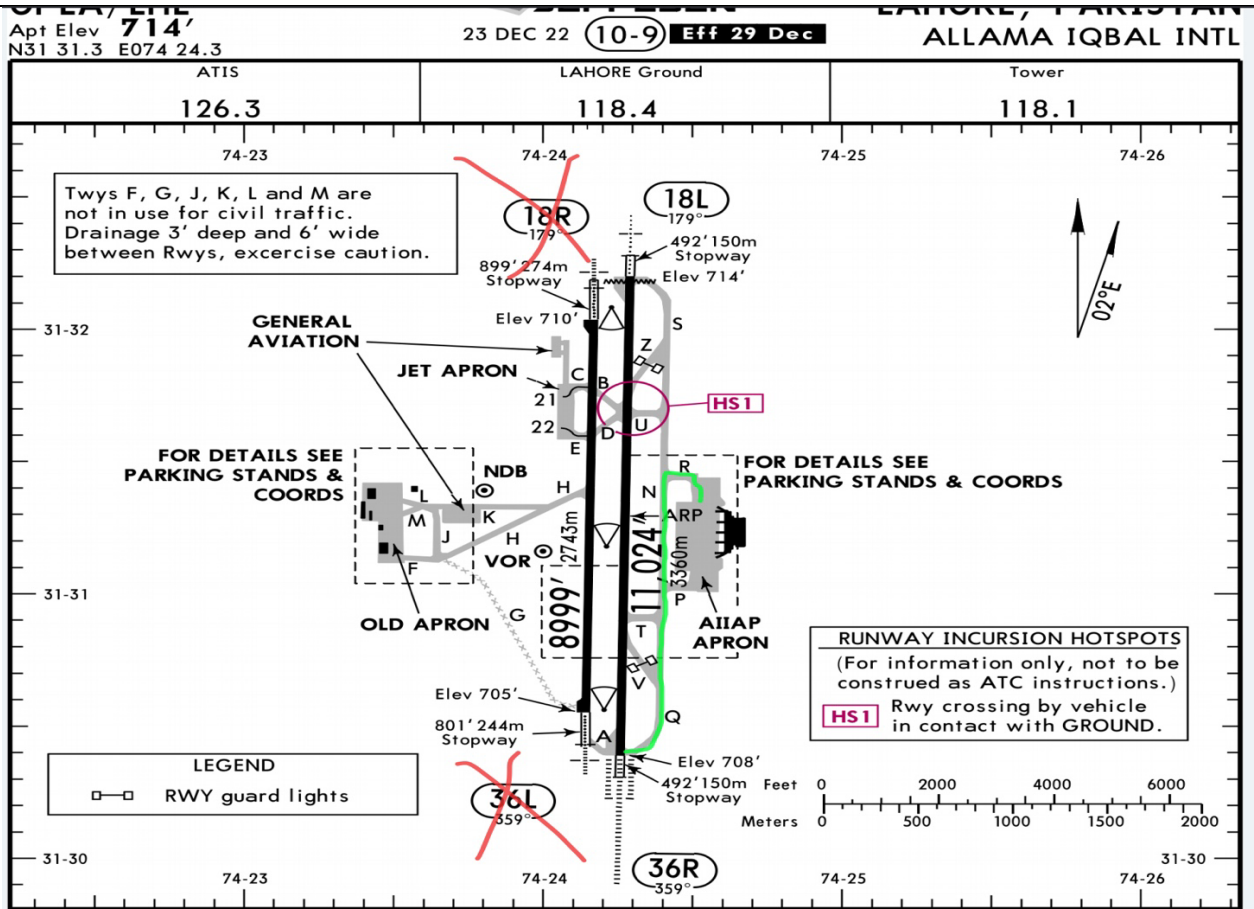
**AIRPORT BRIEFING**

Revision 1.0

Pakistan – Allama Iqbal International Airport– OPLA

Feb 2023

Origin	OPLA
Destination	OERK
Alternate	OEDF
Enroute Alt	OPKC OOMS OMDB OEDF
Date	23/02/2023
Time	10:28Z
Route	VERE1D VEREN G214 PG T385 TAPDO A454 VUSET N571 ALPOB L768 ULADA T136 OTISU N112 GETOT Q212 ETBAS ETBA1A
Metar	OPLA 230955Z 30015KT 6000 NSC 28/05 Q1012 TEMPO 33015G25KT
ATC	OERK Flight Plan Route MIMAL2D 36R FL140 SQ:XXXX
Briefing	<ul style="list-style-type: none">• Folks of Birds around the RWY.• ATC Phraseology.
Frequencies	GROUND 118.100 TOWER 118.400 (Was not used) APPROACH 121.300 ALATA 127.500 LAHOR EAST MIMAL 123.150 LAHOUR SOUTH SK 128.350 KARATCHI PG 133.250 KARATCHI SOUTH TAPDO 128.150 MUSCAT TODIV 119.800 MUSCAT MENSA 132.550 UAE TUDIS 124.375 UAE ALPOB 132.850 BAHRAIN SOLOB 124.300 BAHRAIN EGMOR 133.250 JEDDAH GETOT 126.000 RIYADH APPROACH 120.00
Taxi	



SID

Apt Elev 714	Trans alt: 4000 RNP 1 required Provision of RAIM prediction, if considered, is the responsibility of the operator.
BIBUN 2D [BIBU2D] MIMAL 2D [MIMA2D] RNP DEPARTURES (RWYS 36L/R)	
SID	ROUTING
BIBUN 2D	Climb straight ahead to 2500, turn LEFT direct to LA401, then to ALATA, then to BIBUN climbing to ATC assigned level.
MIMAL 2D	Climb straight ahead to 2500, turn LEFT direct to LA401, then to ALATA, then to BIBUN, then to MIMAL climbing to ATC assigned level.

