

**AIRPORT BRIEFING**

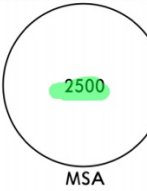
Revision 1.0

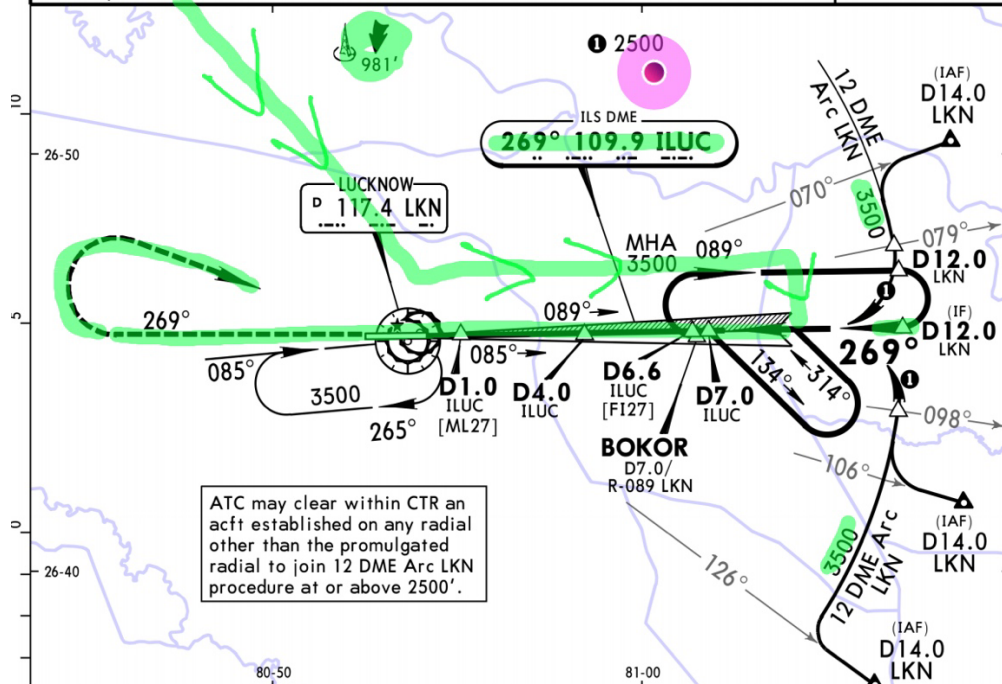
INDIA – Lucknow International Airport VILK

Aug 2023

| | |
|--------------------|---|
| Origin | OERK |
| Destination | VILK |
| Alternate | VIDP |
| Date | 08/26/2023 |
| Time | 02:141Z |
| Route | ALTA1J ALTAV H976 MUSRI P891 GESOR L308 DAROR T308 DASUT N717 KHM M561 ASVIB G665 PG G214 RK G452 LKN |
| Metar | 27008KT 4500 BR FEW100 26/24 Q1002 NOSIG |
| Briefing | <ul style="list-style-type: none">• Category A Airport.• No Star except Radar Vectors 40nm from LKN VOR.• Delhi will advise you to check in with Lucknow Control to establish two-way Comm.• We were advised to check in with LKN Approach at position PAVRU about current FL.• ATC phraseology is poor (ATC is in a rush when speaking, even though it was only us approaching the Airport).• Upon vacation the RWY they asked for the Aircraft Registration. |

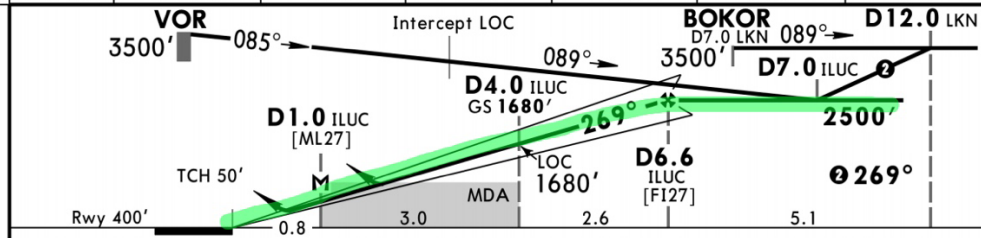
VILK/ ILS Rwy 27 CHAUDHARY CHARAN SINGH INTL 21 JUL 23 (11-1) ILS Rwy 27

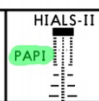
| | | | | | | | |
|--|----------------------------------|---|--------------------------------------|--------------------------------|--|--------------------------|--|
| D-ATIS 126.8 | | *LUCKNOW Approach 125.8 | | *LUCKNOW Tower 118.6 | | Ground 121.625 | |
| LOC ILUC 109.9 | Final Apch Crs 269° | GS D4.0 ILUC 1680' (1280') | ILS DA(H) Refer to Minimums | Apt Elev 406' | | Rwy 400' | |
| MISSED APCH: Climb STRAIGHT AHEAD to 2500', then climbing turn RIGHT to VOR to join holding at 3500', or as directed. | | | | | | |  <p>MSA LKN VOR</p> |
| Alt Set: hPa | | Rwy Elev: 15 hPa | | Trans level: By ATC | | Trans alt: 4000' | |
| DME required. | | | | | | | |



Approach

| | | | | | | |
|--------------|----------|-------|-------|-------|-------|-------|
| LOC (GS out) | ILUC DME | 2.0 | 3.0 | 4.0 | 5.0 | 6.0 |
| | ALTITUDE | 1040' | 1360' | 1680' | 2000' | 2310' |

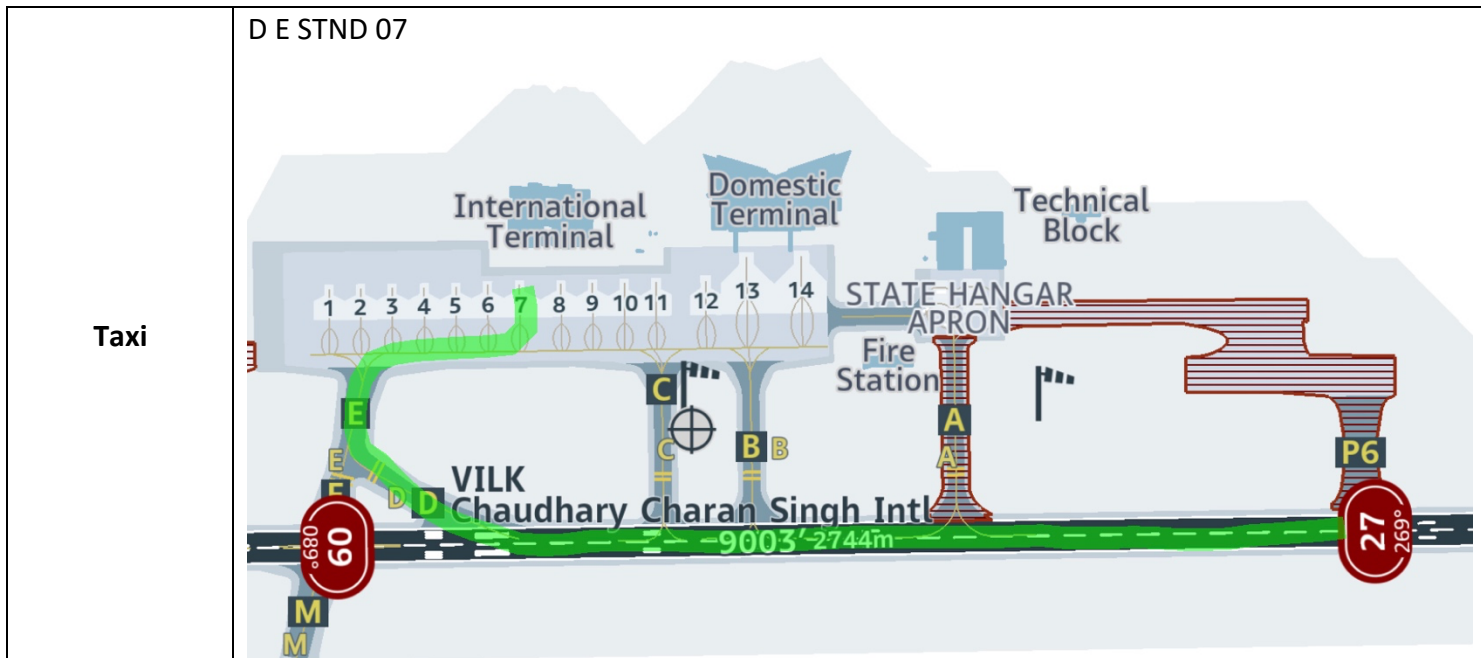


| | | | | | | | |
|-----------------------------|-------|-----|-----|-----|-----|-----|---|
| Gnd speed-Kts | 70 | 90 | 100 | 120 | 140 | 160 | HIALS-II  |
| ILS GS or LOC Descent Angle | 3.00° | 372 | 478 | 531 | 637 | 849 | |
| MAP at D1.0 ILUC | | | | | | | |

| | | | | | |
|-------------------------------|--|---------------------------------------|--|--------------------------------|--|
| Standard/DGCA | | ILS STRAIGHT-IN LANDING RWY 27 | | LOC (GS out) | |
| DA(H) ABC: 650' (250') | | D: 660' (260') | | CDFA MDA(H) 800' (400') | |
| FULL | | TDZ or CL out | | ALS out | |

| | | | | | |
|---|-----------------|-------------------|-----------|-----------|-----------|
| A | | | | | RVR 1500m |
| B | RVR 550m | RVR 550m I | | | |
| C | | | RVR 1300m | RVR 1100m | RVR 1800m |
| D | RVR 600m | RVR 600m I | | | |

I RVR 750m when a Flight Director or Autopilot or HUD to DA is not used.





AIRPORT BRIEFING

Revision 1.0

INDIA – Lucknow International Airport VILK

Aug 2023

| | |
|--------------------|--|
| Origin | VILK |
| Destination | OERK |
| Alternate | OEDF |
| Date | 08/28/2023 |
| Time | 03:48Z |
| Route | LKN M890 JAL R594 SSB L626 DPN G333 MERUN R471 RK G214 PG G665 ASVIB N312 MIDS A453 SOLOB L768 ULADA T136 OTISU N112 GETOT Q212 ETBAS ETBA1A |
| Metar | 280330Z RWY27 28010KT 5000 HZ FEW020 SCT025 30/23 Q1002 NOSIG |
| ATC | OERK M890 FL340 RWY27 AFTER T/OF RWY HDG FL060 |
| Briefing | <ul style="list-style-type: none"> • Birds around the Apron. • Obtain FIC/ADC numbers from GND staff. • ATC Clearance will be given during Taxi. • Lucknow Control will advise you to check in with Delhi Control to establish two way Comm while CLB around FL240 |
| Taxi | <p>RWY 27 via B Time 55</p> |
| SID | NONE |